

CLALLAM MRC MEETING AGENDA

April 15, 2024
5:30 p.m. – 7:00 p.m.
Hybrid Meeting



Zoom Meeting Link: <https://us06web.zoom.us/j/85314804485>

Meeting ID: 853 1480 4485

Passcode: 12345

For more information about the MRC, please contact Rebecca Mahan at (360) 417-2322

5:30 Welcome by Chair Tim Cochnauer

5:35 Call To Order / Introductions

5:40 Public Comment / Approval of Minutes

- Approval of March minutes

5:45 Announcements

- Storage space moved to Port Angeles – [J&P Mini Storage](#)
- Annual report (Oct 2022-Sept 2023) complete and available

5:50 Presentation

- Max Showalter and Cynthia Harbison, of the [Washington Department of Natural Resources](#), will present on the [kelp and eelgrass health plan](#)
 - Seeking discussion from MRC members

6:20 NWSC Update

- NWSC monthly meeting – Alan Clark

6:25 Advisory Role

- Subcommittee status – Tim Cochnauer and Ann Soule
- Aquaculture subcommittee next steps – **Tim Cochnauer**

6:35 Field Project Updates

- *Olympia Oyster – Chris Burns*
- *Forage Fish – Tim Cochnauer*
- *Elwha Beach Stewardship – Helle Andersen*
- *Ediz Hook – Helle Anderson*
- *Sound Toxins – Nancy Stephanz*
- *Pinto Abalone – Jeff Ward & Alan Clark*

Projects inactive this month:

- Pigeon Guillemot – Ed Bowlby
- Kelp surveys – Jeff Ward & Alan Clark
- Shellfish Biotoxins – Bob Vreeland

2024 Meetings

January 22

April 15

July 15

October 21

February 26

May 20

August 19

November 18

March 18

June 17

September 16

December 16

6:50 Education/Outreach

- Coasters – please help distribute to known as well as new venues
- New Displays – Ann seeking input from project leads wanting a new poster
- Interns – Ann and Rebecca pursuing intern possibilities
- Website – Amelia is taking suggestions for content, new ideas, etc.
- Future presentations – topic suggestions?

7:00 Other Updates/New Topics

- Rescue tug letter – Mike Doherty
- Green crab update – Ioana Bociu and Joann Labaw volunteered
- [River and Ocean Film Festival](#) July 2024, Port Angeles Field & Event Center – submission deadline in one week, April 22
- Recruiting for open MRC members – Development Community, Marine Related Recreation & Tourism, Makah Tribe, and District III Alternate
- Upcoming elections in May for Chair and Vice Chair positions (Tim stepping down; Ann willing to continue as Vice Chair but not Chair)

7:15 Good of the Order

7:20 Public Comment

7:25 Adjourn

Clallam County DCD is inviting you to a scheduled Zoom meeting.

Topic: MRC

Join Zoom Meeting

<https://us06web.zoom.us/j/85314804485?pwd=N3dMbHRyL3l5TnpKNGtVSGtWYk5VQT09>

Meeting ID: 853 1480 4485

Passcode: 12345

One tap mobile

+12532158782,,85314804485#,,,,*12345# US (Tacoma)

Dial by your location

+1 253 215 8782 US (Tacoma)

2024 Meetings

January 22	April 15	July 15	October 21
February 26	May 20	August 19	November 18
March 18	June 17	September 16	December 16

STATEWIDE KELP FOREST AND EELGRASS MEADOW HEALTH AND CONSERVATION PLAN

*15 April 2024
Clallam MRC Meeting*



DNR KELP AND EELGRASS PRIORITIZATION PLAN

GOALS OF THE STATEWIDE KELP AND EELGRASS PLAN:

- 1 Protect and recover at least 10,000 acres of priority native kelp & eelgrass habitat by 2040
 - 2 Identify and mitigate stressors in priority habitats
 - 3 Monitor distribution and trends in priority habitats
- 

DEVELOPMENT PROCESS

- Staff-to-staff Tribal engagement
- Convened expert working group of Tribes, academia, government, non-profits
- Held public workshops
- Early Tribal review



KELP AND EELGRASS ENGAGEMENT PLAN (2SSB 5619)

RCW 79.135.440

Prepared by
Washington State Department of Natural Resources
Office of the Commissioner of Public Lands, Hilary Franz
December 1, 2022



FRAMEWORK OUTLINE

1. **Why** protect kelp and eelgrass?
2. **What** habitats can we best protect or recover?
3. **How** will we protect or recover habitats?



WHAT DOES VALUABLE MEAN?

Ecological

- Water quality
- Supporting food webs
- Nursery habitat for juvenile species
- Blue Carbon
- Species diversity
- Multi-benefits across species

Economic

- Climate Resilience and Mitigation
- Recreation and Commercial
- Food Webs
- Blue Carbon
- Workforce Development

Socio/Cultural

- Honor Tribal Treaty rights and knowledge
- Community outreach and education
- Sense of place and connecting to nature
- The spiritual value of kelp and eelgrass
- Diverse opportunities for recreational activities

For a workshop summary and recordings, visit:
dnr.wa.gov/kelp-and-eelgrass-plan



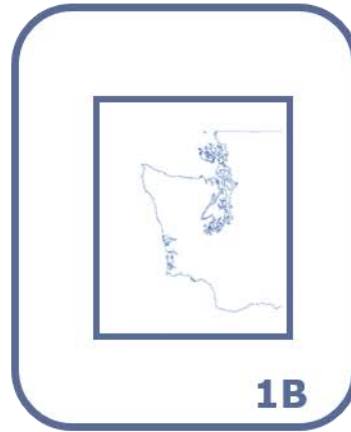
PRIORITIZATION FRAMEWORK

STEP 1: STATEWIDE HIGH VALUE AREA IDENTIFICATION



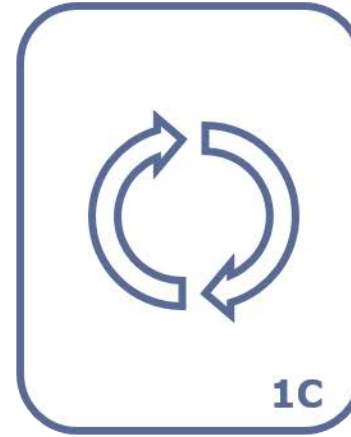
1A

SHARED VALUES



1B

HIGH VALUE AREAS

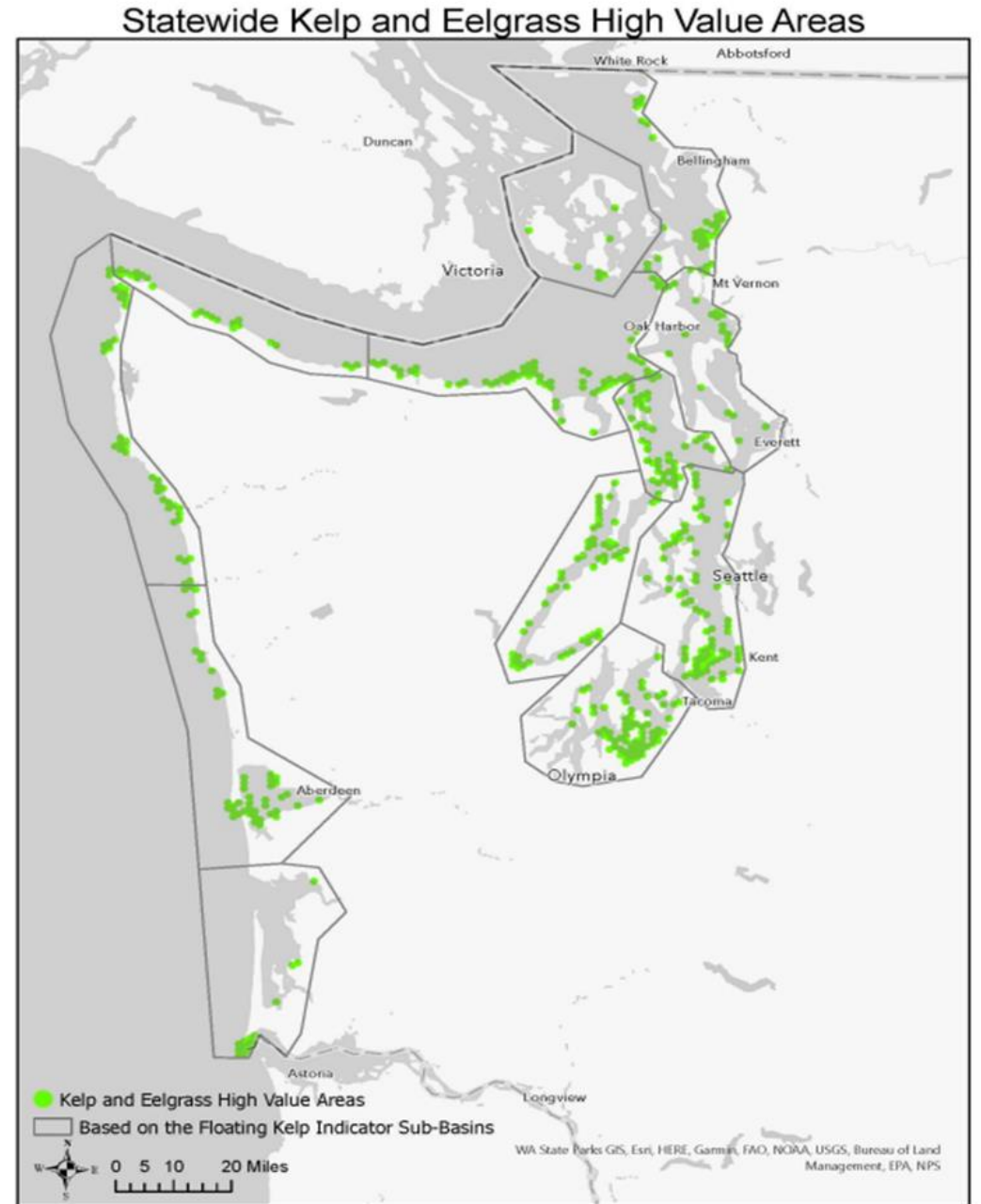


1C

REVISION

HIGH VALUE AREAS

- Mapped areas of shared ecological, economic, and cultural value
- Identified gaps in knowledge and need for deeper local context



PRIORITIZATION FRAMEWORK

STEP 1: STATEWIDE HIGH VALUE AREA IDENTIFICATION



1A

SHARED VALUES



1B

HIGH VALUE AREAS



1C

REVISION

STEP 2: SUB-BASIN SCALE PRIORITY AREA IDENTIFICATION



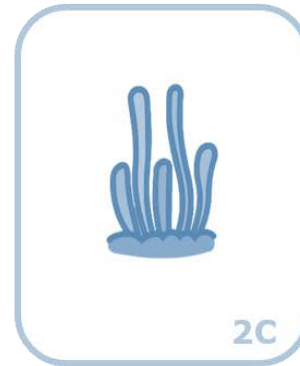
2A

LOCAL DATA



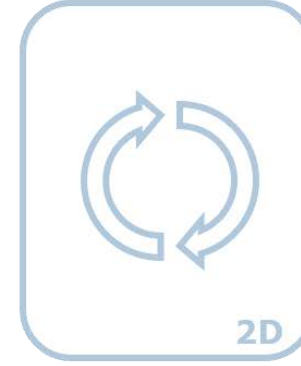
2B

SHARED ACTIONS



2C

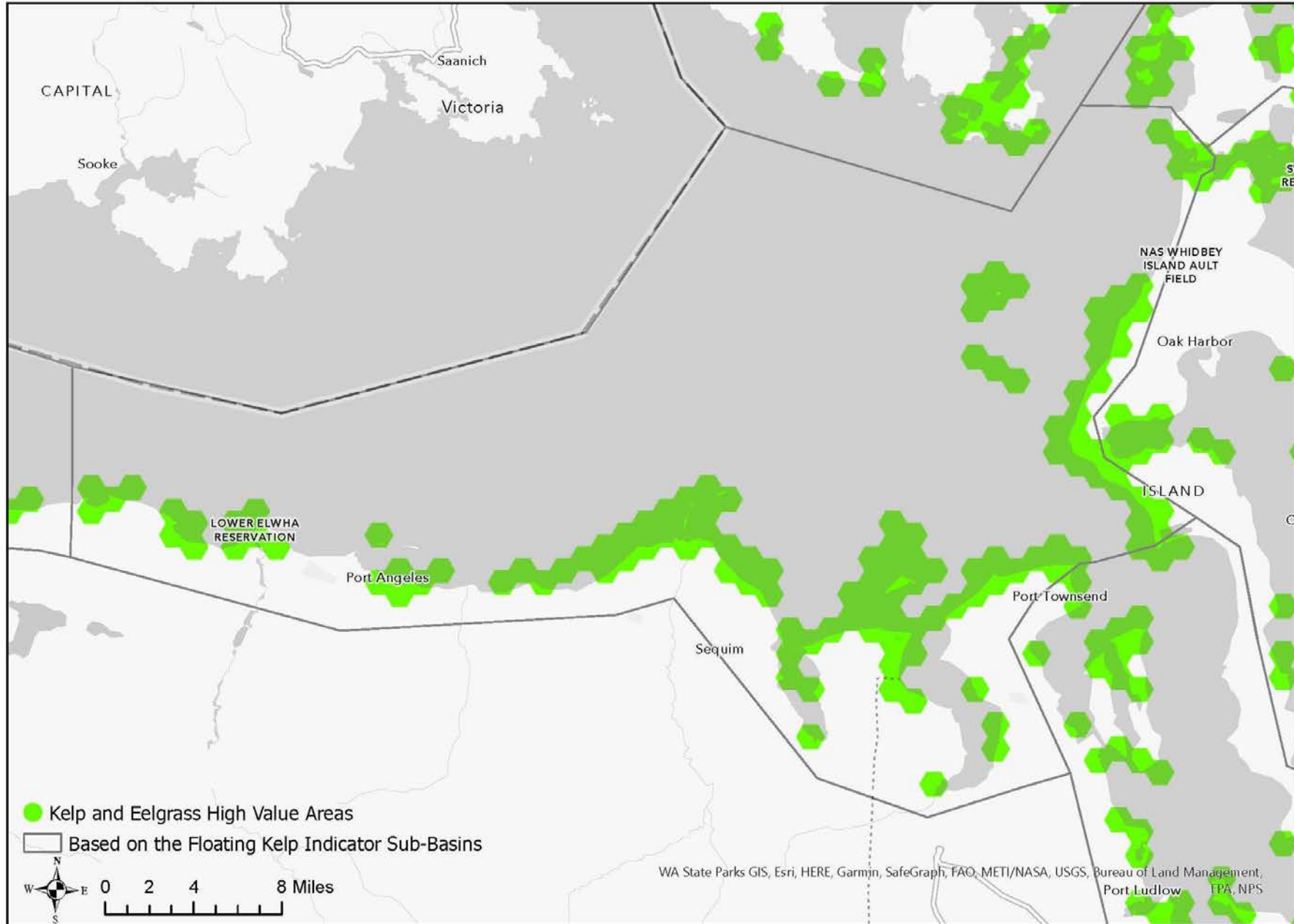
PRIORITY AREAS



2D

REPEAT

Eastern Strait of Juan de Fuca High Value Areas



IMPLEMENTATION GOALS

1. Support ongoing efforts by DNR and partners, particularly in High Value Areas
2. Identify ways to support new efforts in High Value Areas
3. Identify at least 10,000 acres of DNR managed lands for DNR-lead conservation and recovery actions; and
4. Proactively identify and leverage opportunities for conservation and recovery as they arise.



IMPLEMENTATION GOALS

1. Support ongoing efforts by DNR and partners, particularly in High Value Areas
2. Identify ways to support new efforts in High Value Areas
3. Identify at least 10,000 acres of DNR managed lands for DNR-lead conservation and recovery actions; and
4. Proactively identify and leverage opportunities for conservation and recovery as they arise.

Kelp Monitoring



Kelp beds are highly productive nearshore habitats that support commercial and sport fish, invertebrates, marine mammals and marine birds. Many factors, both natural and anthropogenic, affect the extent and composition of kelp beds. For example, elevated water temperature and intense sea urchin grazing can decimate kelp beds. El Nino events stress kelp by producing several winter storms and reducing upwelling events, which normally replenish the nutrients in the water column. Human influences on kelp beds include sewage and other runoff that decrease water quality and reduce light in the water column. Human activity can also lead to changes in substrate size, which can either increase or decrease available kelp habitat. Kelp plants can be physically damaged by boat propellers and fishing gear. Commercial harvest is not a significant factor of concern in Washington State due to a law prohibiting this practice.



The Nearshore Habitat Program surveys and monitors kelp in Puget Sound and along the open coast. The Nearshore Habitat Program also facilitates the [Washington State Kelp Research and Monitoring Workgroup](#).

NEW STATEWIDE FLOATING KELP INDICATOR

In May 2023, a new statewide floating kelp indicator was released to inform management and research actions. An alliance of diverse organizations completed the project, including the DNR Nearshore Habitat Program, The Samish Indian Nation, The Northwest Straits Commission and the county Marine Resource Committees, University of Washington, Sea Grant and Marine Agronomics. The indicator will be added to The Puget Sound Partnership's Vital Signs.

- [Statewide Summary Report](#)
- [Monitoring Program Design and Data Assessment Protocols](#)
- [Interactive Map](#)

CONTACT

Nearshore Habitat Program
360-902-1030
nearshore@dnr.wa.gov

RELATED LINKS

[Nearshore Habitat Program Biotic Community Monitoring Eelgrass Monitoring Eelgrass Stressor Response Program Seagrass Restoration Inventory Special Projects Publications Puget Sound Eelgrass Monitoring Data Viewer WA Marine Vegetation Atlas](#)

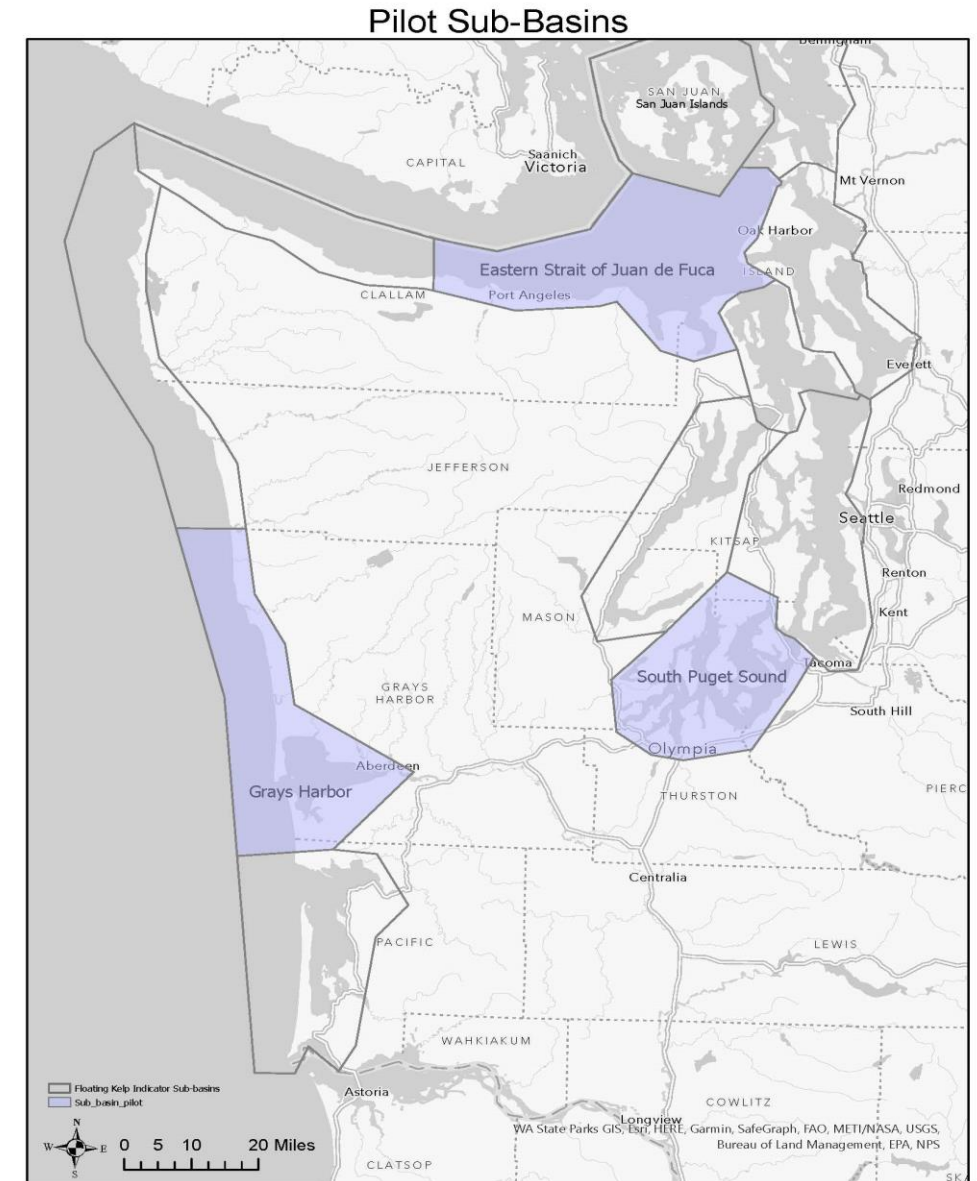
IMPLEMENTATION GOALS

1. Support ongoing efforts by DNR and partners, particularly in High Value Areas
2. Identify ways to support new efforts in High Value Areas
3. Identify at least 10,000 acres of DNR managed lands for DNR-lead conservation and recovery actions; and
4. Proactively identify and leverage opportunities for conservation and recovery as they arise.



IMPLEMENTATION GOALS

1. Support ongoing efforts by DNR and partners, particularly in High Value Areas
2. Identify ways to support new efforts in High Value Areas
3. Identify at least 10,000 acres of DNR managed lands for DNR-lead conservation and recovery actions; and
4. Proactively identify and leverage opportunities for conservation and recovery as they arise.



SUB-BASIN PLANNING

Desired Outcomes

A kelp and eelgrass protection zone that:

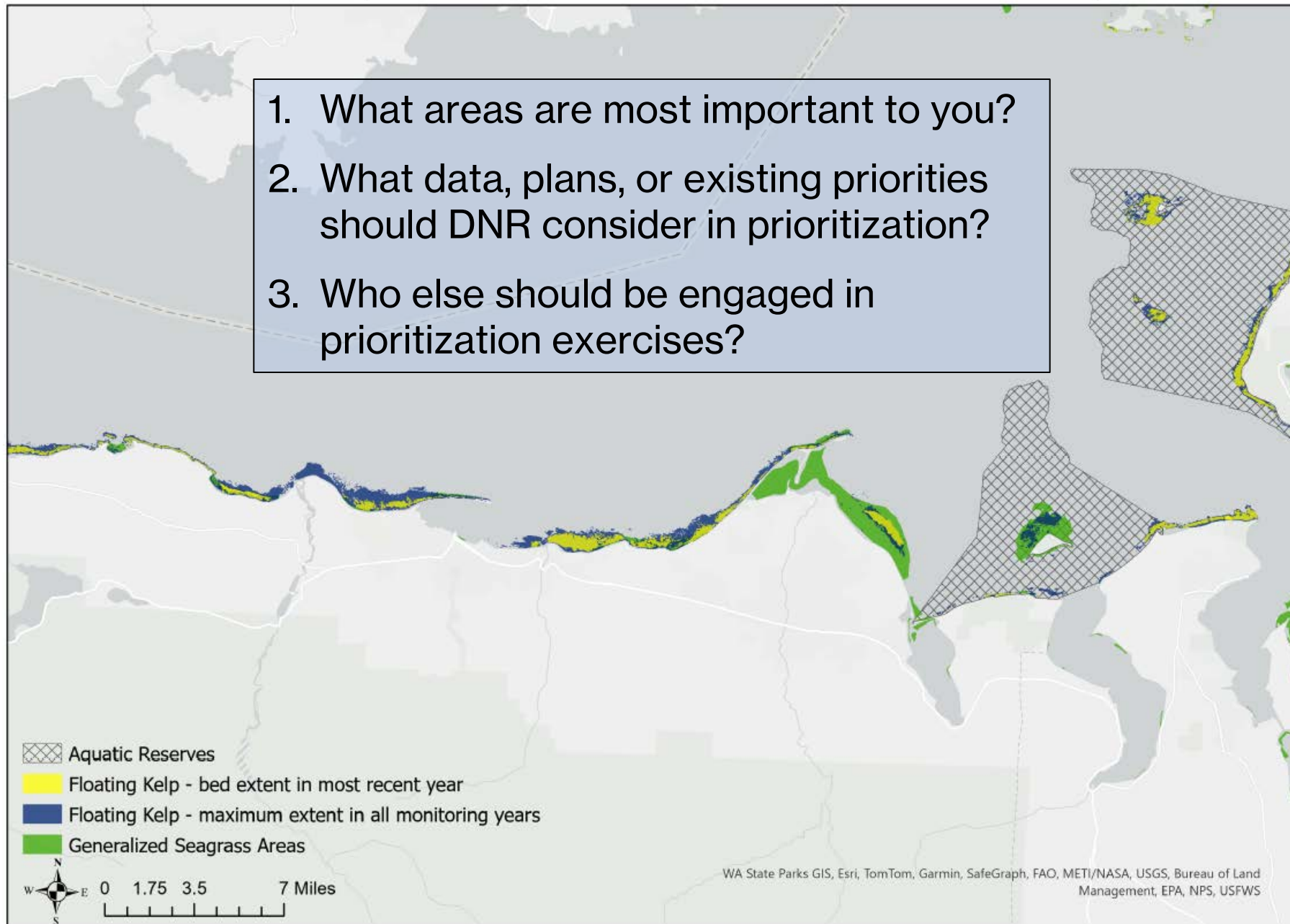
- Has strong ecological value, given an overview of stressors and trends
- Reflects Tribally identified values and needs, with full Tribal support
- Has partner and public buy-in
- State-owned aquatic lands available for a withdrawal order

A high-level plan of activities associated with the protection zone with:

- Developed with Tribes as co-stewards
- A synthesis of stressors in the area
- At least one key partner
- DNR resources that can be applied or are needed

Statewide Kelp and Eelgrass Health Plan - Eastern Strait Layers

1. What areas are most important to you?
2. What data, plans, or existing priorities should DNR consider in prioritization?
3. Who else should be engaged in prioritization exercises?



CONTACTS

Cynthia Harbison

cynthia.harbison@dnr.wa.gov

Max Showalter

max.showalter@dnr.wa.gov

dnr.wa.gov/kelp-and-eelgrass-plan



Statewide Kelp and Eelgrass Health Plan - Eastern Strait Layers

1. What areas are most important to you?
2. What data, plans, or existing priorities should DNR consider in prioritization?
3. Who else should be engaged in prioritization exercises?

