

CLALLAM MRC MEETING AGENDA

June 16th, 2025
5:30 p.m. – 7:00 p.m.
Hybrid Meeting



Zoom meeting link: <https://us06web.zoom.us/j/83769639254?pwd=FmcMflhkxw6df902xa2tsxu6UAHGVB.1>

Meeting ID: 837 6963 9254

Passcode: 12345

For more information about the MRC, please contact Cathy Lear at (360) 417-2361

Welcome by Chair LaTrisha Suggs / Call to Order / Roll Call

- Determination of quorum

Public Comment on agenda items, *limited to 3 minutes per participant at the discretion of the Chair*

Presentation

- Amy Olsen MMA, Seattle Aquarium Research Scientist: Northern Sea Otter Foraging Analysis in Washington State

Approval of Minutes – May

Announcements

- Recap: NWSC meeting in Clallam County May 30, 2025 - Alan Clark and LaTrisha Suggs
 - [Link to presentation “Identify, Investigate, Integrate, Inform: MRCs as Advisory Bodies”](#)
- 2025-2027 grant proposals submitted to Northwest Straits Commission
 - NODC RFP for SaniKan and dog waste bags at Place Rd trail - Rebecca/Amelia
- [Forever Streamfest](#) and [Dungeness River Festival](#) tabling sign ups
- Letter of Support: Northwest Straits Foundation proposal for PA Harbor and Sequim Bay Derelict Crab Pot Removal Project. FYI: letter provided, copy attached
- Update on recruitment

Committee and Project Reports

- Project Leads report only if an update is needed
- Advisory Sub-Committee
 - [City of Port Angeles Comp Plan Update](#)
 - June 12th, City presented first draft of Comp plan at open house.
 - June through September pop up events to engage and educate community members
 - BOCC Priorities Memo follow-up
 - Nearshore Actions
 - [Rayonier Pier cleanup](#) – plan potentially coming forth in June
 - Port of Port Angeles, Cofferdam Facility Seawall

2025 Meetings

January 16 (Thu)
February 20 (Thu)
March 17

April 21
May 19
June 16

July 21
August 18
September 15

October 20
November 17
December 15

- Barge facility, upland asphalt paving and stormwater treatment to their intermodal handling & transfer facility. Improvements include protecting existing sheet pile barge berth with a fiberglass sheet pile encasement, the asphalt of 12 acres of upland and the installation of a three stage biofiltration facility to treat stormwater from the facility.
- Permits: NPDES, 401 WQC, Clean Air Act (CAA), Shoreline Substantial Development Permit; DOE Coastal Zone Management, USACE NWS-2025-170

Discussion of next meeting date and agenda

- Next regular meeting Monday, July 21st
- Call for new agenda items
 - Budget discussions as needed

Public Comment *Limited to 3 minutes per participant at the discretion of the Chair*

Good of the Order

Adjourn

Clallam County DCD is inviting you to a scheduled Zoom meeting.

Join Zoom Meeting – NEW link as of April and onward

<https://us06web.zoom.us/j/83769639254?pwd=FmcMflhkxw6df902xa2tsxu6UAHGVB.1>

Meeting ID: 837 6963 9254

Passcode: 12345

One tap mobile

+12532050468,,83769639254#,,, *12345# US

+12532158782,,83769639254#,,, *12345# US (Tacoma)

Dial by your location

• +1 253 215 8782 US (Tacoma)

2025 Meetings

January 16 (Thu)

February 20 (Thu)

March 17

April 21

May 19

June 16

July 21

August 18

September 15

October 20

November 17

December 15



CLALLAM COUNTY MARINE RESOURCES COMMITTEE

Northern Sea Otter (*Enhydra lutris kenyoni*) Foraging Analysis in Washington State

Amy Olsen MMA, Research Scientist

June, 2025

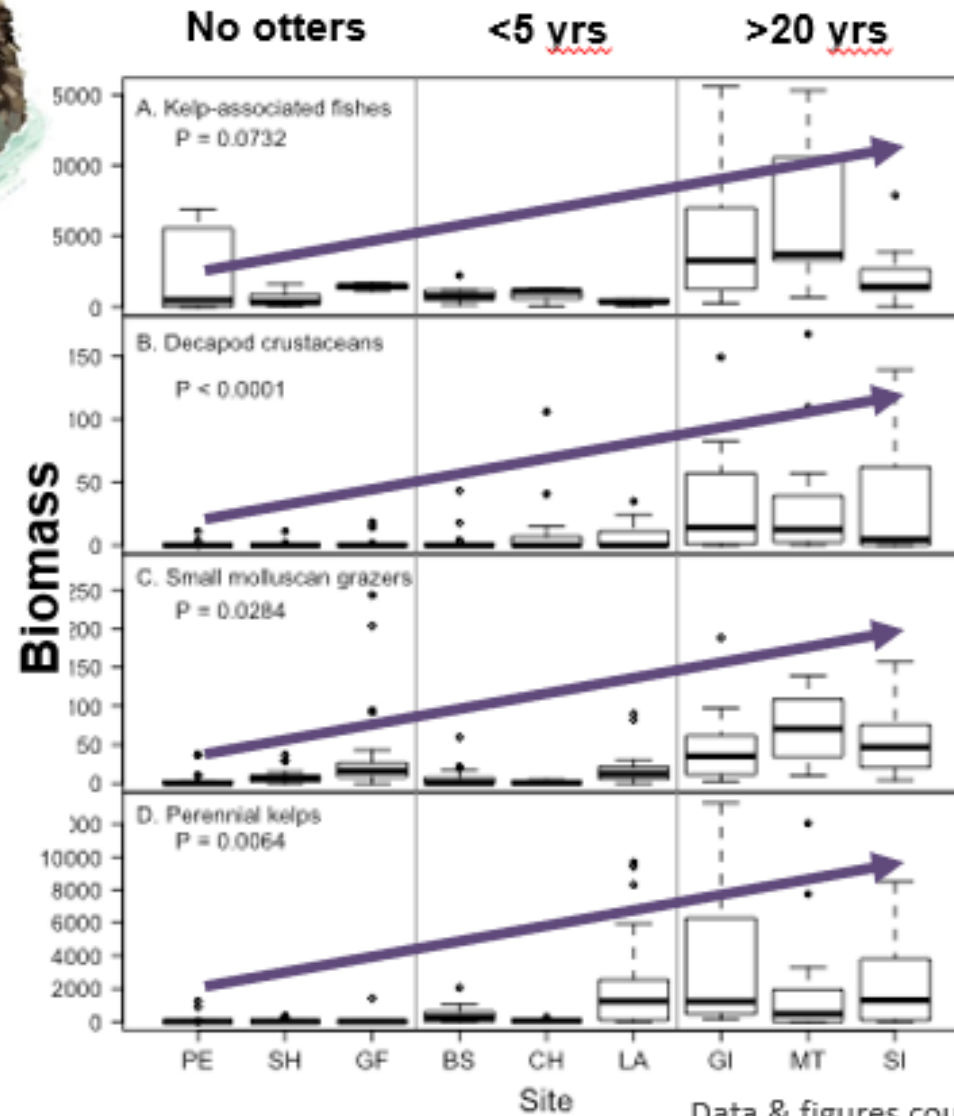


Sea Otters





Increase in
amount of
kelp forest
fishes,
small crabs,
small grazers
& perennial
kelps

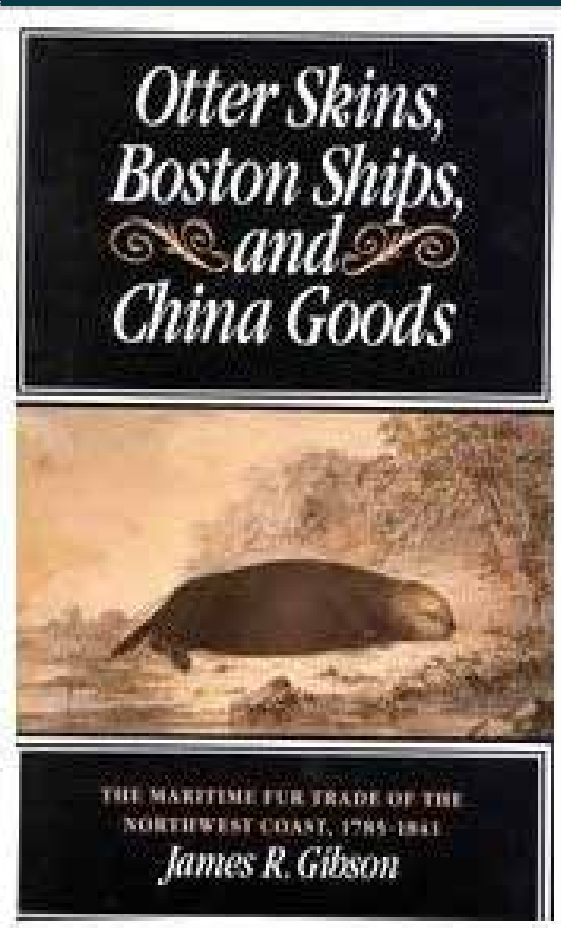


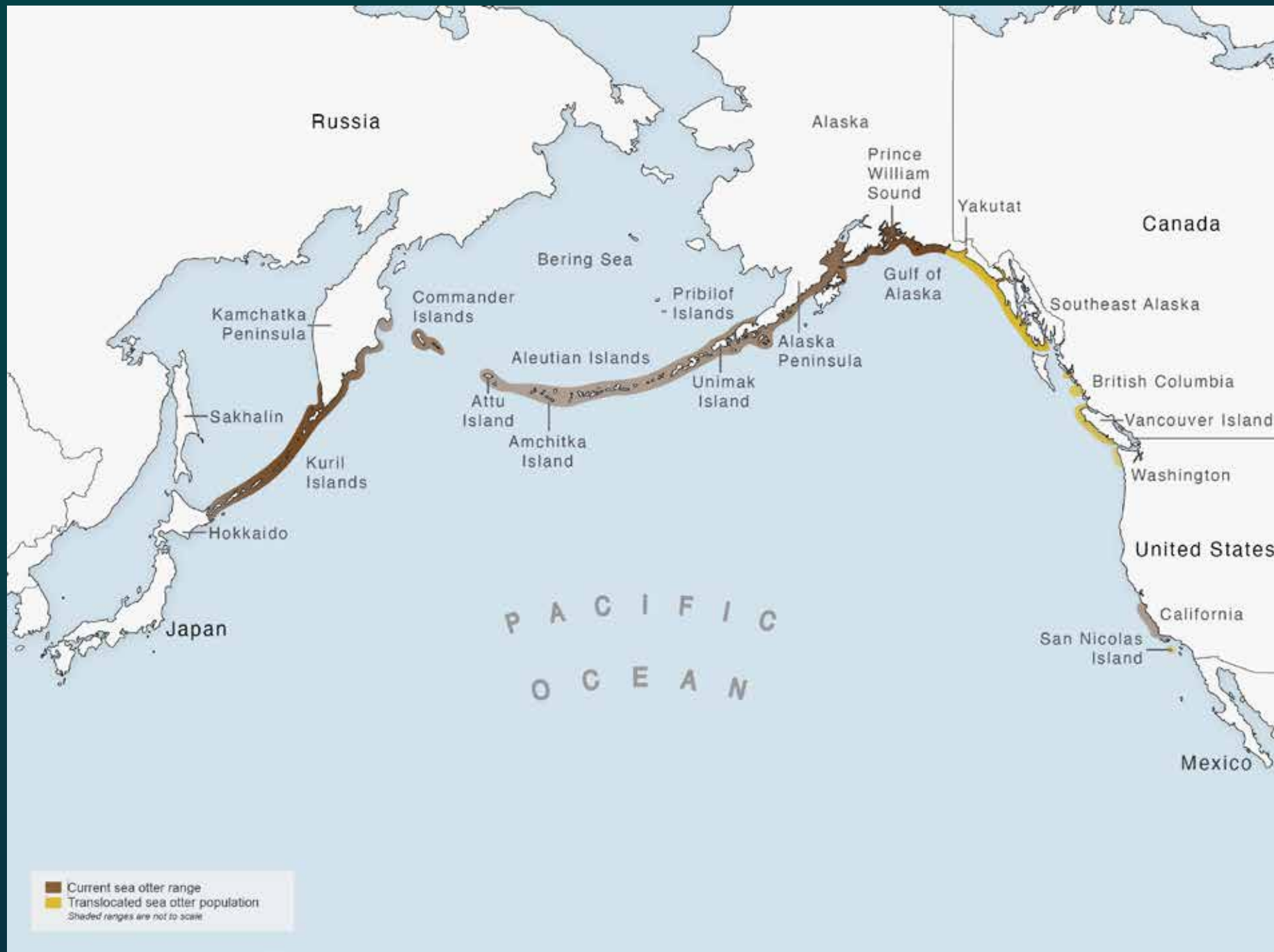
Data & figures courtesy of Martone & Markel,
unpublished data from West Coast Vancouver Island

ir.

History

- Washington's last native sea otter was hunted in 1910 near Willapa Bay.
- Almost 60 years later, sea otters were reintroduced from Amchitka, AK
 - 29 near Point Grenville (1969)
 - 30 near La Push (1970)
- An estimated 10 animals survived and founded the population today





Annual Population Survey

- Multi-day annual count.
- Organized by USFWS and WDFW.
- The Seattle Aquarium has been participating every year since 2000.

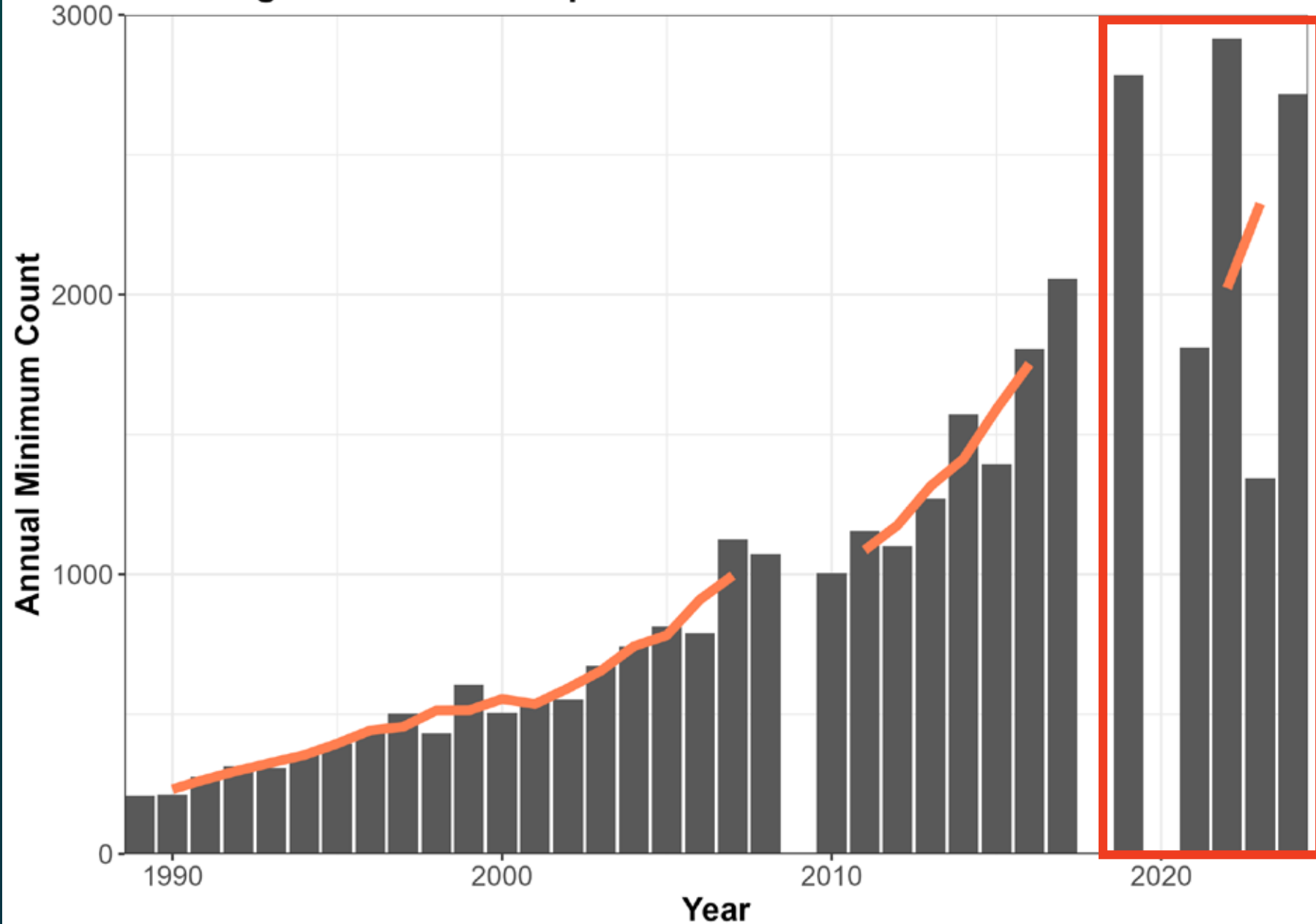


Methods

- Aerial survey via photography from small plane
- Ground observers conduct shore-based visual surveys

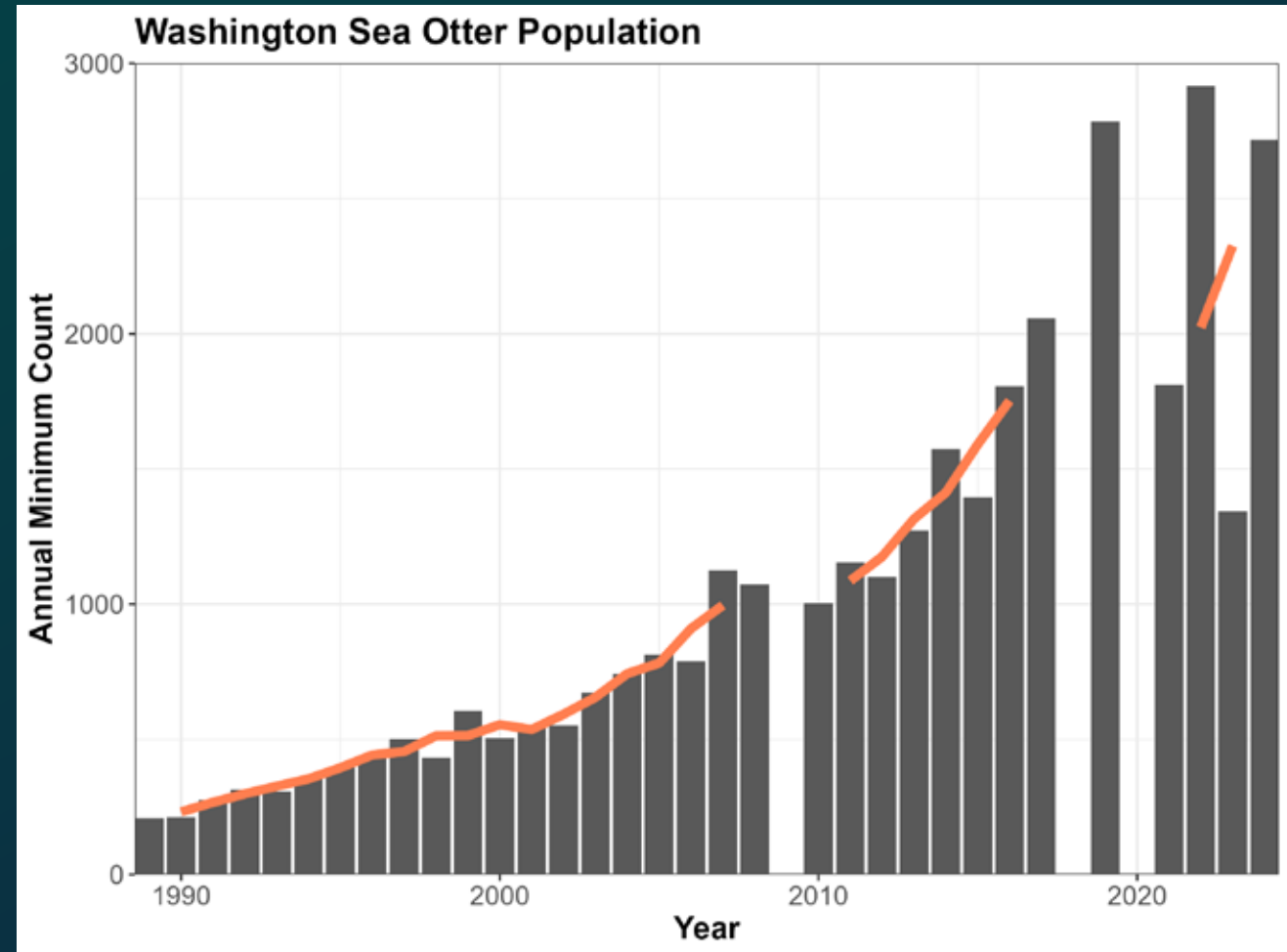


Washington Sea Otter Population



Challenges

- **2021:** dense fog during survey week, only one survey was completed.
- **2022:** ran 2 offshore transects for first time and counted substantial otter numbers 2-4 miles offshore.
- **2023:** thick fog during survey week, flew again one month later and finished one complete survey. No offshore transects.

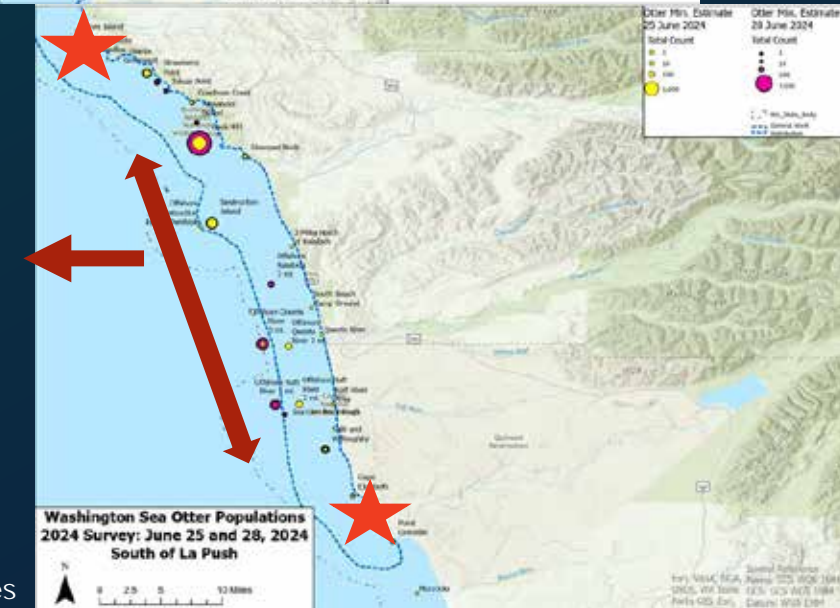
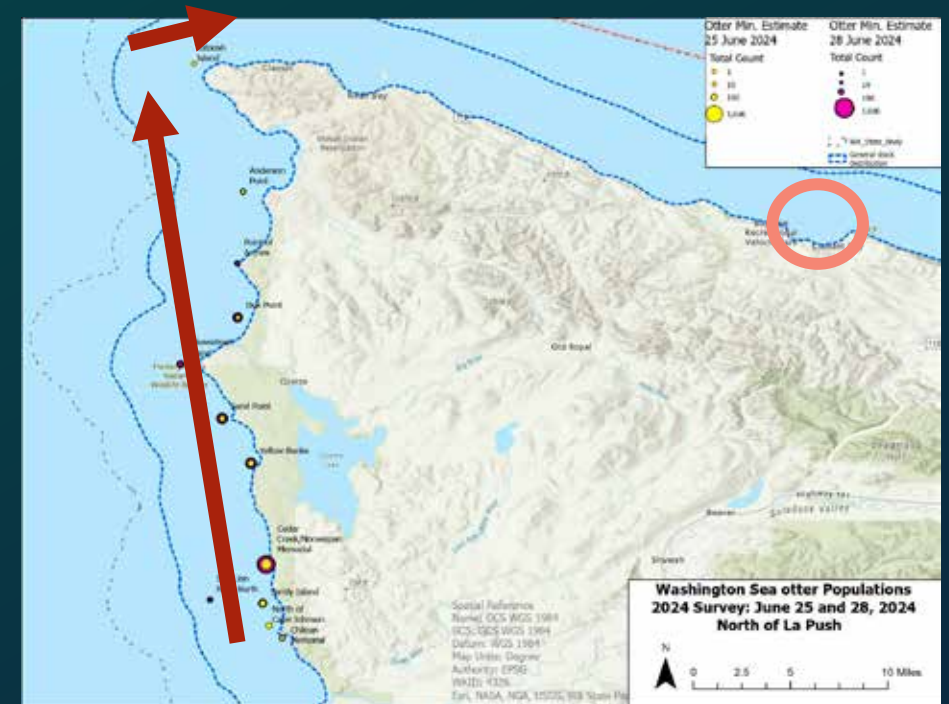


Challenges



Range Expansion

- The sea otter population reached equilibrium levels in the central area in the mid-1990s
- Expanded north and east, after 2000, sighting frequency decreased in the Strait of Juan de Fuca
- In mid-2000s, expanded range southward
- In 2022, found otters are moving offshore
- In 2024, group of otters in Clallam Bay!



★ = reintroduction sites

WA Foraging Project



- Quantify foraging success and intensity
- The goal is to create a large database similar to CA and AK populations
- Provide information on status of population and relative abundance of prey





Page _____ of _____

Sampling Date: _____

Date data entered / initials: _____

[illegible]

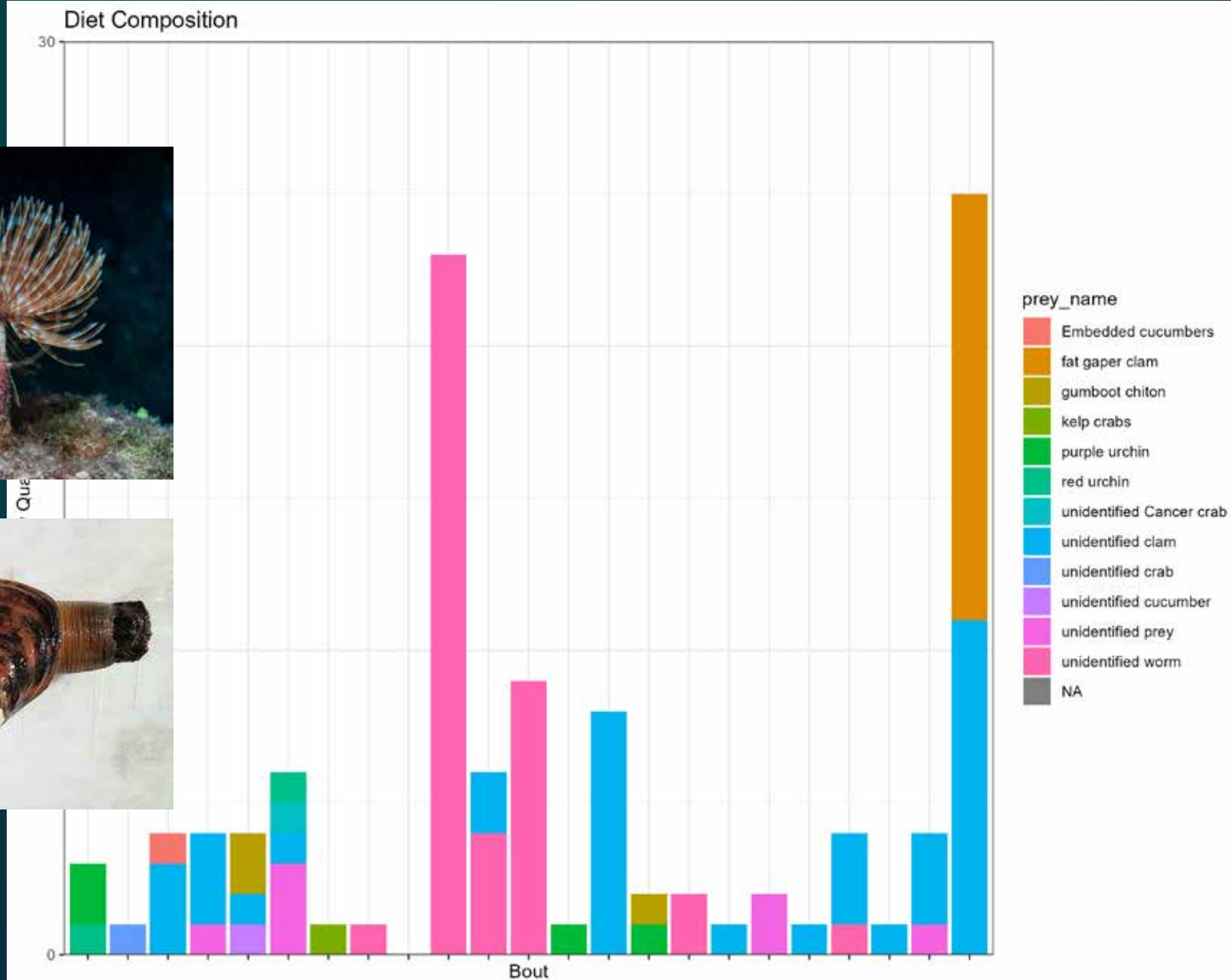
Where: ER = emergent rocks; IN = intertidal; KC = kelp canopy; OW = Open water; UN = unknown.
Obs condition (otter dist, visibility, glare, chop, etc.): Excellent, very good, good, fair, poor, Unknown
Pup: VS = very small, S = small, M = Medium, L = Large, Y = Yes, N = No pup, U = unknown
Why prey not eaten: dropped, gave to pup, stolen by other than pup, unknown



Observations in Clallam Bay

Date	# otters
5/21/24	20
6/24/24	13
8/13/24	20
8/15/24	7
1/21/25	13
3/25/25	2
3/26/25	0
4/16/25	5
5/13/25	0
5/14/25	5

www.emeralddiving.com



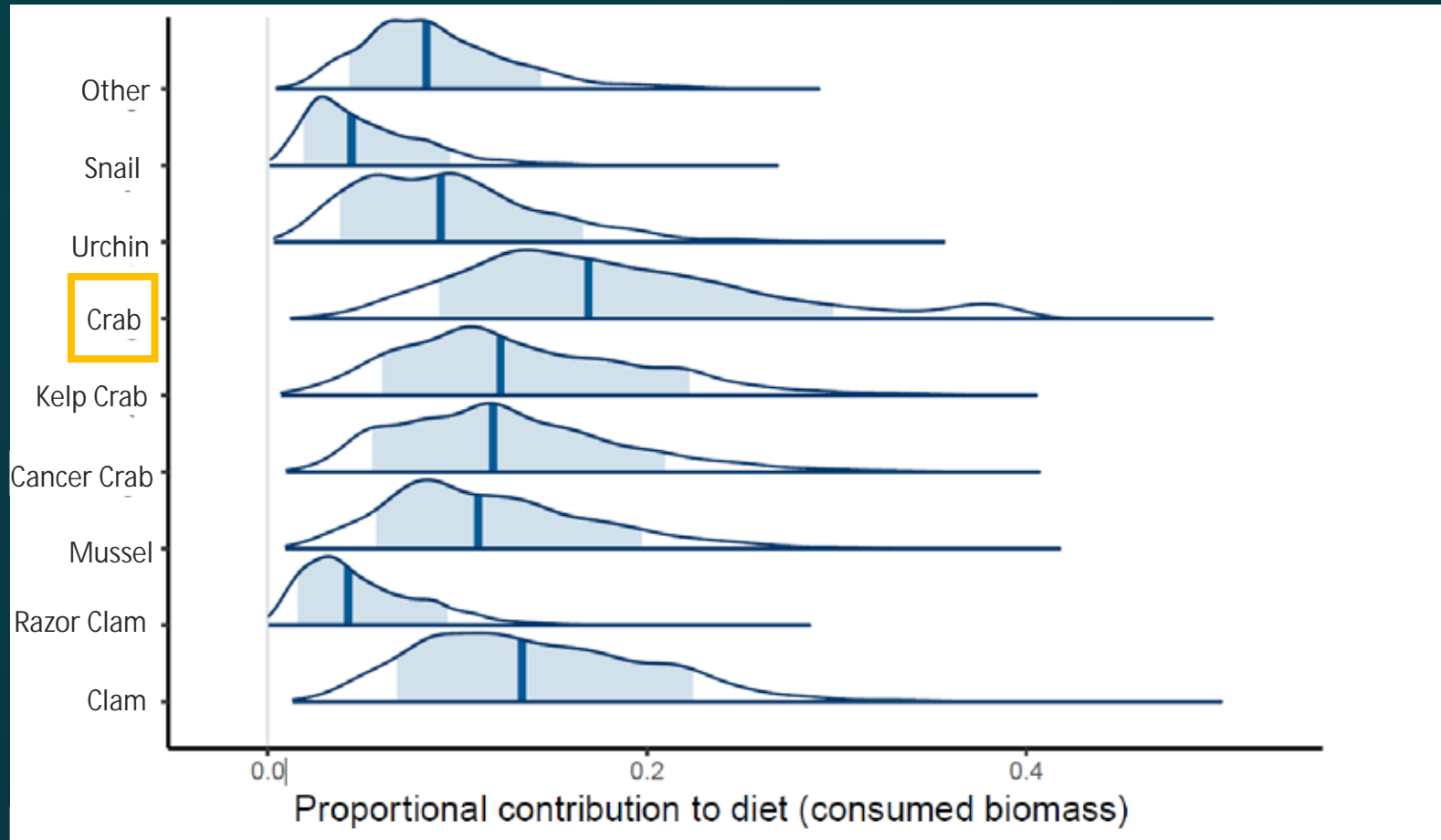
Data Analysis

- **Sea Otter Foraging Analysis (SOFA 3.2) Model**

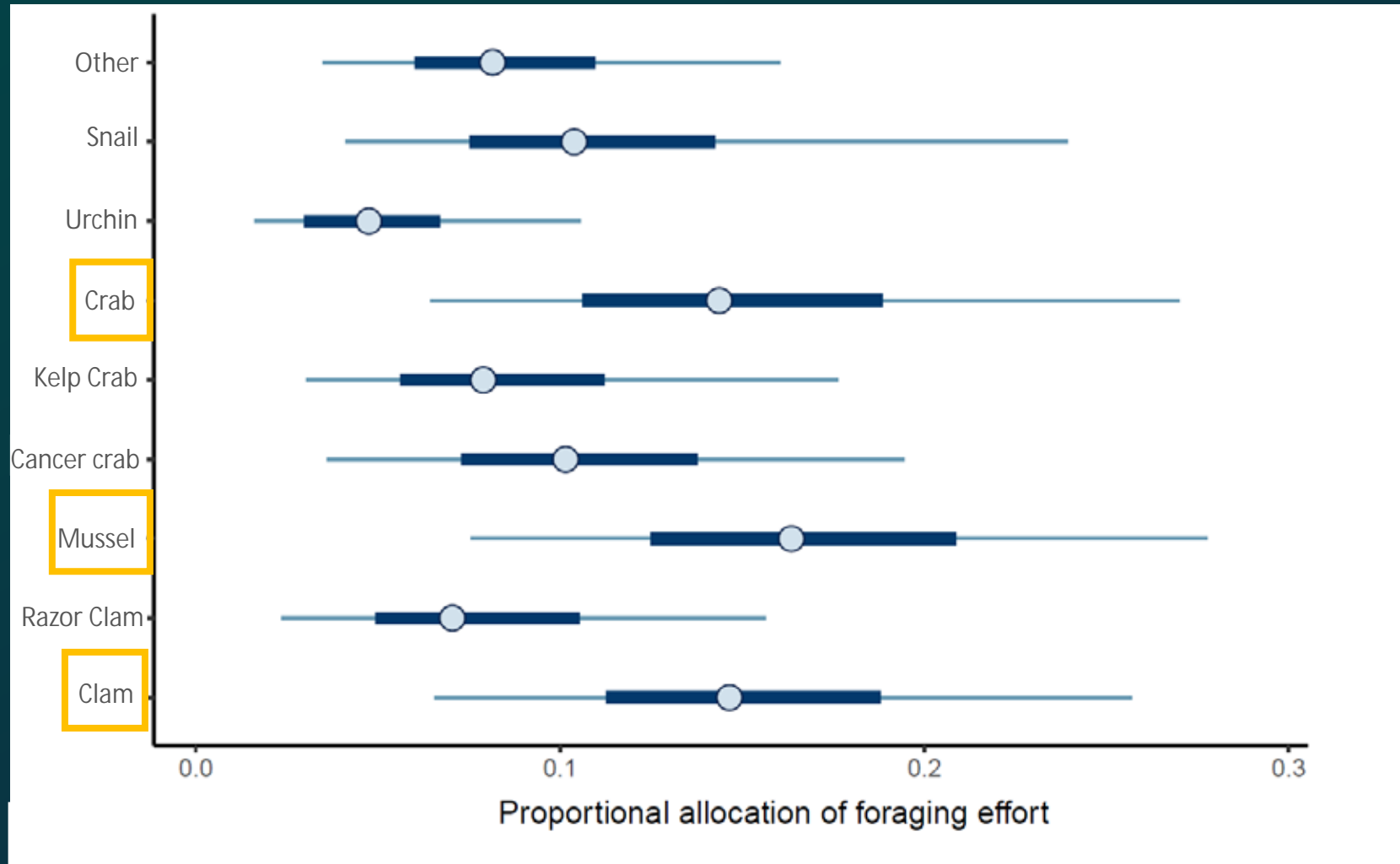
- Bayesian methods are used to fit a process model to observational data
- Questions
 - How sea otters allocate effort (energy)
 - How much of each prey type contributes to diet
 - Overall net rate of biomass consumption and energy intake
- Makes educated guesses for unknown prey items



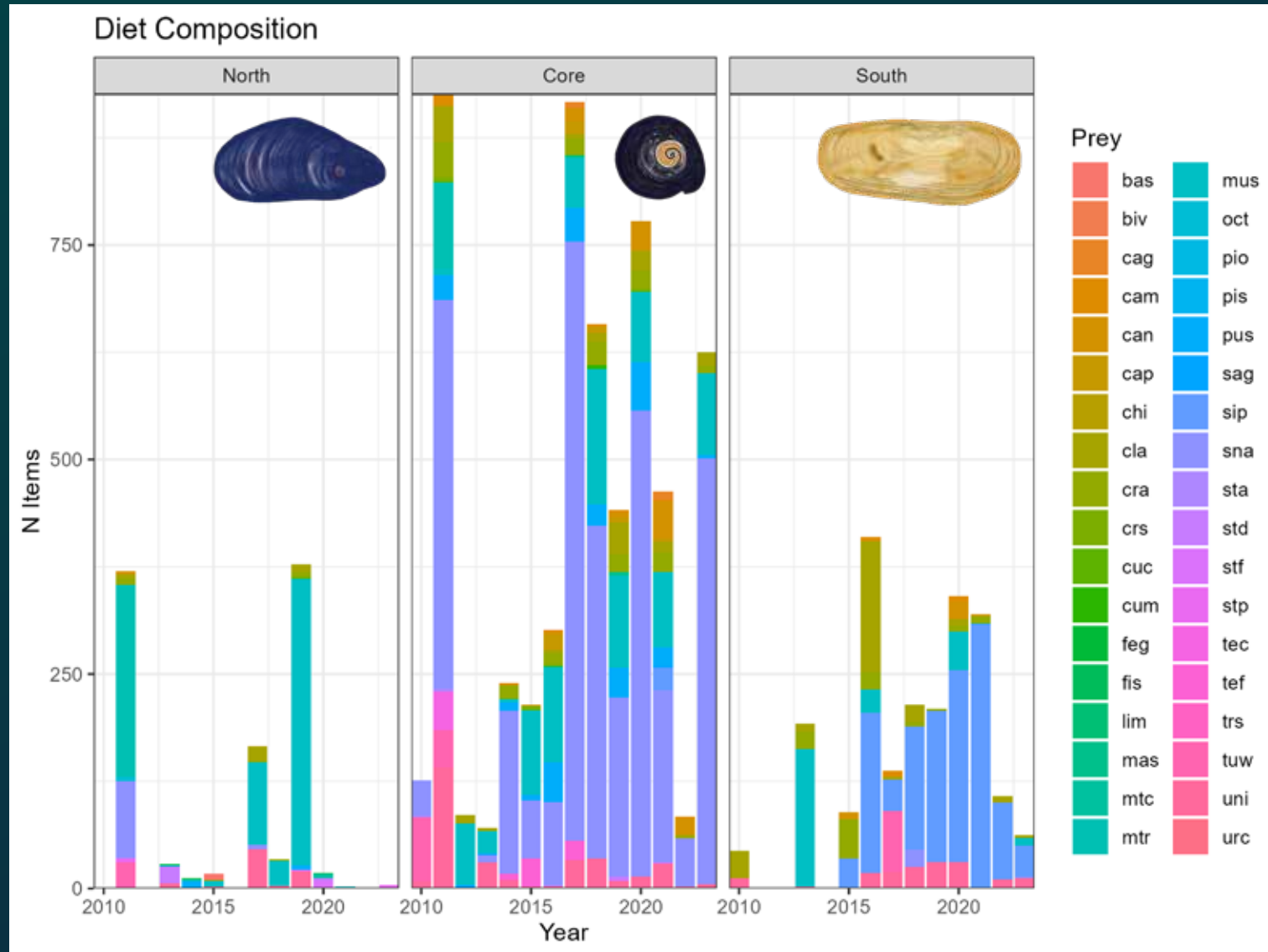
SOFA 3.2 – Entire Range



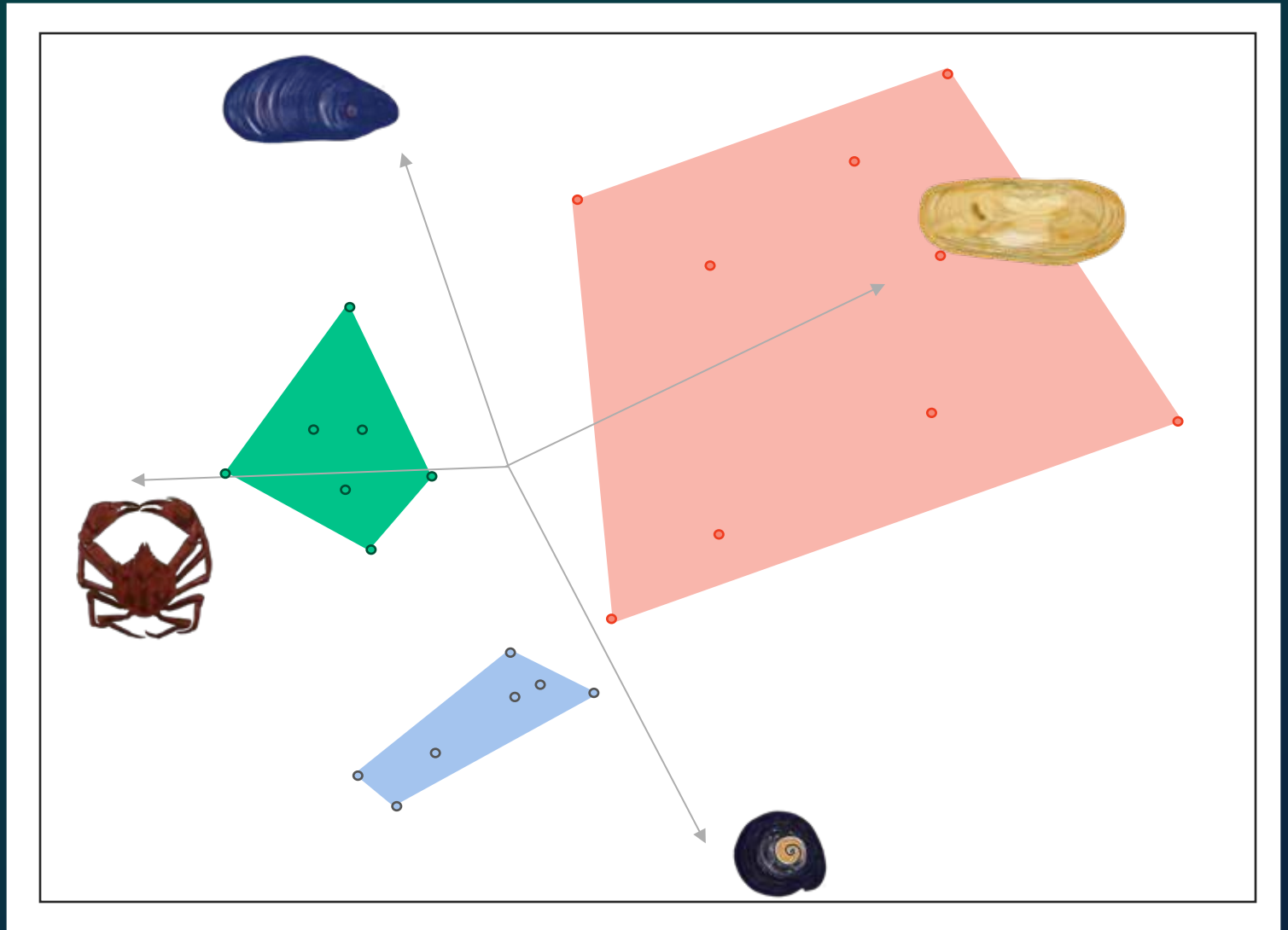
SOFA 3.2 – Entire Range



Diet Composition

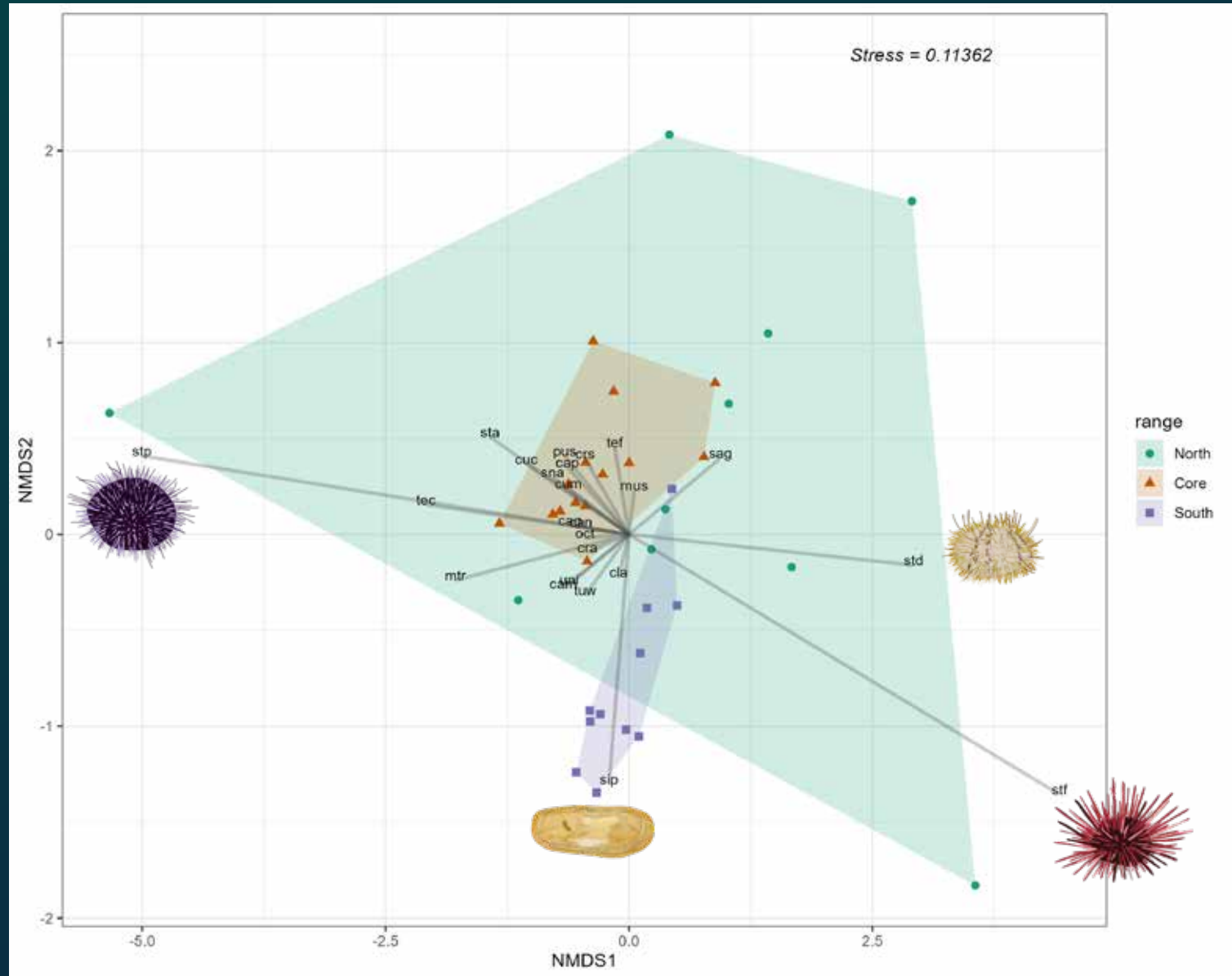


NMDS EXAMPLE



NMDS

- Removed 12 rare species (<5 occurrences)
- PERMANOVA
 - Significant difference in community structure between Range
 - Range explains 15% of the variance (pseudo- $F_{2,123} = 15.64$, $p = 0.001$)
 - Pairwise comparisons
 - **Core** and **South** significantly different (pseudo- $F_{1,106} = 28.51$, $p = 0.004$)

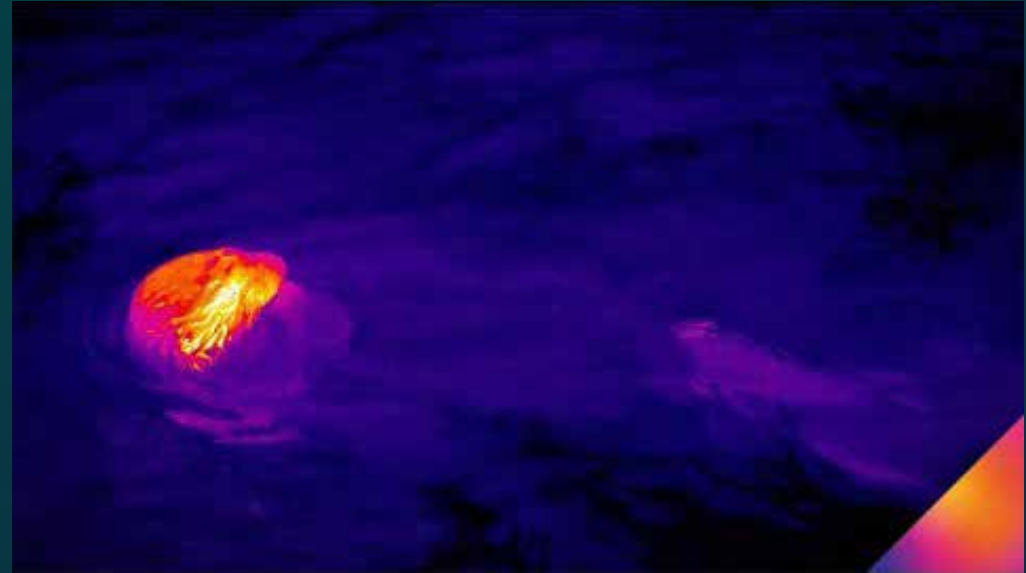


Summary

- In Clallam Bay, the otter's diet is diverse as they are coming back into a "new" area. Observing mostly young males which may be inexperienced.
- Prey items in the North and Core are more similar than the South range.
- This is important to note as the sea otters continue to expand their range north/northeast and south.



Next steps...





Thank you

a.olsen@seattleaquarium.org



C/o Clallam County Department of Community Development

May 20, 2025

223 East 4th Street, Suite 5
Port Angeles, WA 98362-3015

Virginia Institute of Marine Science
Nationwide Fishing, Trap, Removal, Assessment, and Prevention Program
1375 Greate Road
Gloucester Point, Virginia 23062

Re: Northwest Straits Foundation proposal for Port Angeles Harbor and Sequim Bay Derelict Crab Pot Removal Project

To Whom it May Concern:

On behalf of the Clallam County Marine Resources Committee (MRC), please accept this letter of support for the Northwest Straits Foundation's proposal to locate and remove derelict crab pots in the marine waters of Clallam County, WA within Port Angeles Harbor and Sequim Bay.

As one of 7 counties comprising the Northwest Straits Initiative, the Clallam MRC advises the Board of County Commissioners regarding issues related to the marine resources of the Strait of Juan de Fuca and its bays, estuaries, and inlets within the borders of Clallam County. A part of the Clallam MRC's mission is to address local issues. The MRC's Strategic Plan for 2025-2029 states that the Clallam MRC may participate in regional efforts to prevent and /or remove derelict fishing and boating gear, especially derelict vessels and crabbing gear, to reduce the threat posed to marine ecosystems by this debris.

The Clallam County MRC recognizes that the loss of thousands of crab pots each season poses a threat to the resource and sustainability of our Dungeness crab fishery. These lost crab pots continue to trap and kill many Dungeness crab every year and the Foundation's work focuses on reducing this non-target mortality.

Survey and removal of derelict crab pots in high priority areas and targeted outreach to users to prevent crab pots from becoming lost are key actions for reducing harm from derelict fishing gear in Washington's marine waters. Removal operations eliminate the current and future threat of derelict crab pots; outreach to user groups prevents re-accumulation of lost fishing gear. These efforts are necessary to prevent re-accumulation and protect marine species and habitats in the Salish Sea.

The Northwest Straits Foundation is a leader in addressing the problem of derelict fishing gear in Washington's Salish Sea since 2002. The Foundation's no-fault approach to removing derelict gear helps them work effectively with partners in the region and gain the trust of the state and tribes, commercial and recreational fishermen, industry, and environmental interests.

The Clallam County Marine Resources Committee strongly supports the work of the Foundation and supports providing funding for the Port Angeles Harbor and Sequim Bay Derelict Crab Pot Removal Project.

Sincerely,

A handwritten signature in blue ink that reads "LaTrisha Suggs".

LaTrisha Suggs, Chair
Clallam Marine Resources Committee